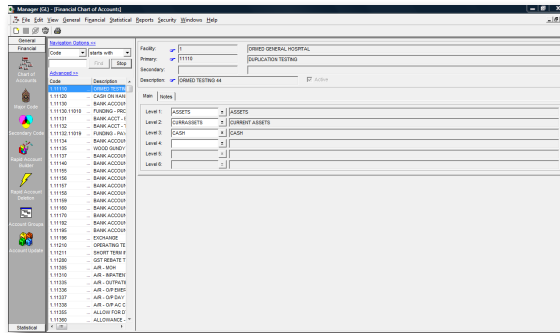




ORMED | MIS General Ledger

Powerful Financial planning at your fingertips

The heart of the ORMED | MIS Finance Management system, ORMED | MIS General Ledger gathers data from across all ORMED | MIS suites to help you create, import, and report financial and statistical data. With a powerful chart of accounts, you have the ability to build your own major and secondary coding and track any financial and statistical data in your ORMED | MIS system.

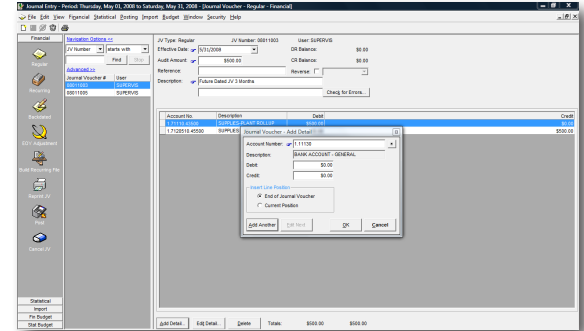


CSS / Ormed GL Manager

The ORMED | MIS General Ledger features a multi-user, multi-fund, and multi-site functionality that allows you to report funds and facilities as individual units or as part of a larger entity. This functionality contains a statistical ledger that matches all features offered with the financial general ledger.

- Customize account groups to enhance reporting requirements
- Use wild cards to build revenue and expense templates that can be applied to hundreds of departments
- Easily satisfy mandatory government reporting requirements with built-in reporting tools
- Streamline year-end reporting by mapping account code segments to particular equity accounts

Intuitive Journal Entry and Budgeting



The GL Journal Entry screen

- Create recurring journal entries with start and stop dates
- Enter back-dated and future-dated journal entries
- Audit the prior fiscal year's adjustments
- Import transactions from third-party subsystems
- Cut and paste journal voucher details from Microsoft Excel® or ORMED | MIS's Discovery EIS tool
- Reprint any journal voucher postings, including postings from prior fiscal years
- Cancel journal vouchers or reverse them in future periods

Easy and Efficient Subsystem Controller

- Manage subsystem imports and fiscal period end controls for all ORMED | MIS suites from a single, central location
- Utilize system-supported 12- and 13-period fiscal schedules

Flexible Reporting

- Build customized and easy-to-understand department reports
- Drill down to source documents at the accounts, journal vouchers, and subsystem level (i.e., receiving reports, invoices, payments, requisitions, inventory issues, pay register, timesheets, etc.)

- Export reports to industry standard electronic formats
- Accurately balance sub ledger accounts with the general ledger via easy-to-read reconciliation reports
- Access audit trail reports for unused journal vouchers, budget changes or additions, and inactive accounts

Conclusion

ORMED | MIS General Ledger is the hub of the ORMED | MIS system. With easy management of subsystem imports and fiscal periods, the ability to build and customize department reports, and to export reports to industry standard electronic formats, ORMED | MIS General Ledger brings peace of mind to all departments.



ORMED | MIS HEALTHCARE MANAGEMENT INFORMATION SYSTEMS

5200 Maryland Way, Suite 310 | Brentwood | TN 37027 USA

www.ormed.com info@ormed.com

Call: 972.839.0579

© Ormed - Healthcare Management Information Systems. All rights reserved. Nov 2015.

ORMED | MIS is a trademark of Ormed Information Systems Inc.

All other trademarks are the property of their respective owners.

